

COM Port Settings

Port Settings

To set the COM Port speed and re-identify which COM port the unit is connected to: In Windows 95/98:



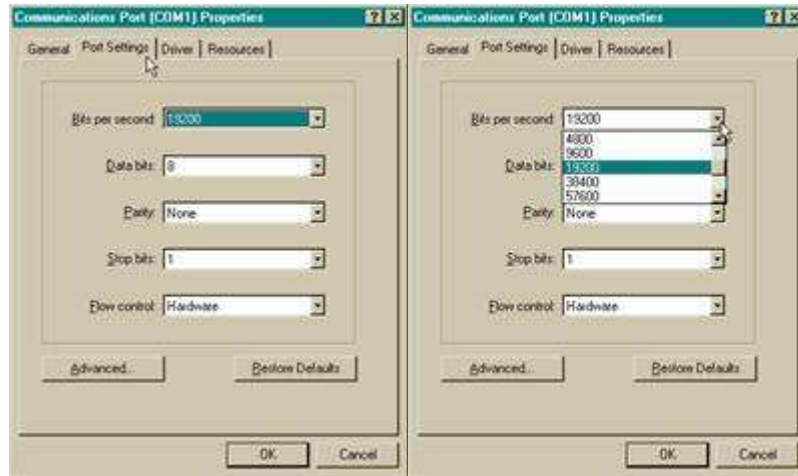
Right click on the "My Computer" Icon Left click on properties Left click on the "Device Manager" tab.

In Windows 2000 and Windows right click on the "My Computer Icon and left click the "Manage" menu item from the drop down. Then on the left side of the next window choose "Device Manager". In all operating systems you will see a similar window as below.



COM Port Settings

Left click on the "plus" (+) sign that is just to the left of "Ports COM and LPT".



Double left click on "COM 1 or 2" (whichever port your engraver is connected to).

Left click on the "Settings" tab Left click on the arrow that appears to the right of the "Bits Per Second" box.

Scroll down until you see "19200" and left click on that number to set it.



Do the same for "Data bits" and set to "8". Set "Parity" to "None". Left click on the arrow to the right of "Flow Control" and set that to "Hardware" Now left click on "OK".

Left click on "OK" again and retry to start your engraver.

You may need to reboot your Computer to put these changes into effect.